



SOCIAL VENTURE
PARTNERS
CHARLOTTE

welcomes you to



SEED₂₀

On Stage

2026

Table of Contents



For additional video content throughout this digital program, click this icon

TONIGHT'S PROGRAM	3
SVP CHARLOTTE & SEED20	4
TONIGHT'S HOSTS	12
THE CLASS OF 2026	14
HOW TO VOTE & DONATE	26
SUPPORTER APPRECIATION	31
SEED20 ALUMNI	45
JOIN US!	53

Tonight's Program

- **INTRODUCTION**
- **THE PITCHES**
- **VOTING**
- **GET TO KNOW SVP CHARLOTTE**
- **PRESENTATION OF AWARDS**
- **CELEBRATION**



March 31, 2026
Central Piedmont Community College
Parr Center Theater



Social Venture Partners Charlotte presents SEED20

Our mission is to invest in & strengthen innovative nonprofits tackling our community's greatest challenges by cultivating and leveraging our network of engaged philanthropists.



Social Venture Partners Charlotte presents SEED20



We envision a thriving nonprofit community equipped to support all people to pursue their full potential in the greater Charlotte area.

Did you know?

**SEED20
OnStage**
marks a
milestone in a
year-long
journey for 10
nonprofits.



**PLUS SVP
Charlotte**
offers ongoing
programming
for alumni to
deepen
community
impact.

Did you know?

Over 30 SVP Partners serve as SEED20 readers and interviewers each year—reviewing, scoring, and meeting with applicants to select the final 10.



Did you know?

Through SEED20, SVP Charlotte delivers

- Coaching & mentorship
- Professional marketing assets
- Exposure & access
- Networking & connections
- Communication tools
- Ongoing programming

SEED20 is one of three SVP Charlotte core programs



SEED20

Connecting our
community to the
region's most
innovative solutions
to pressing social
challenges



INVESTEE

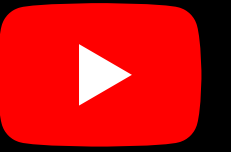
Investing financial,
social, and human
capital in
promising local
nonprofits over
multiple years



SPARK TEAMS

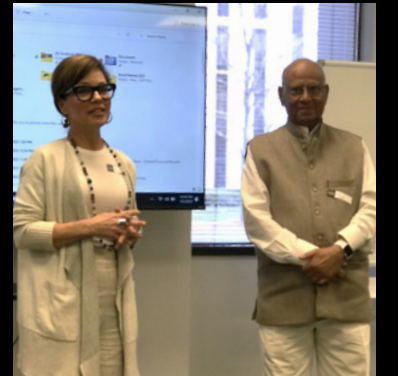
Providing pro bono
consulting to
nonprofits, with a
focus on building
skills and
knowledge

SEED20 is a year-long journey led by SVP Charlotte



spark teams & alumni enrichment

ongoing programming





88% of participants still thriving

\$868K awarded

2,750+ donated consulting hours

62 Spark Team projects

5,000+ OnStage attendees

210 nonprofits have participated

Welcome Our SEED20 OnStage 2026 EMCEES

Lauren Ansley



Lauren Ansley is a Charlotte-based keynote speaker and audience engagement partner who helps bring energy, connection, and presence to meetings and conferences. With a background in live performance and facilitation, she developed a strong ability to connect with audiences in real time and help keep the room engaged throughout an event. Today, Lauren works with organizations, leadership teams, and conferences across industries to support gatherings where meaningful ideas and conversations take center stage. Known for her genuine warmth and approachable presence, she helps create an atmosphere where participants feel comfortable engaging with both the content and one another. As an emcee, Lauren brings thoughtful energy, attentiveness to the room, and a natural ability to keep audiences connected from beginning to end.

Welcome Our SEED20 OnStage 2026 EMCEES

Terri White



Terri L. White is a dynamic leader, community advocate, and lifelong learner committed to advancing arts, culture, and community impact. She currently serves as the first African-American President and CEO of the Charlotte Museum of History, where she leads efforts to elevate Charlotte's rich and diverse historical narrative.

Terri's work spans nonprofit leadership, entrepreneurship, and research, including doctoral studies focused on diversity, equity, inclusion, and belonging in the distilled spirits industry. In addition to her leadership in the cultural sector, she is also developing her own distilled spirits company.

A passionate supporter of community service, Terri regularly volunteers with organizations focused on the arts, humanities, and urban health. Known for her bold leadership and commitment to excellence, she brings energy, insight, and inspiration to every stage she steps onto.





SOCIAL VENTURE
PARTNERS
CHARLOTTE

presents the



SEED₂₀

Class of 2026

Let's Talk About It - The Autism Center, Inc.

A

La Becky Roe

Executive Director

Siblings Speak, offered by Let's Talk About It - The Autism Center, addresses the often-overlooked needs of siblings of children with autism. By providing structured dialogue, emotional support, and peer connection, the program reduces isolation and strengthens family resilience, which empowers siblings to develop coping skills, confidence, and a voice in shaping their own well-being.

SEED20 Coaches

John Pesavento & Lynda Wilhelm

Engage

[f](#) [in](#) Let's Talk About It - The Autism Center

[@](#) letstalkaboutittheautismcenter



The Frankie Mae Foundation

Venitra White-Dean

Executive Director

The Frankie Mae Foundation exists to strengthen those carrying the invisible weight of caregiving. Through respite, wellness, education, critical resources, and supportive community, they tackle caregiver burnout, isolation, and exhaustion. Recognizing caregivers as vital contributors, the Foundation fosters holistic care so families and those who serve them can thrive during life's most challenging moments.

SEED20 Coaches

Lynne Walters & Michael Richardson

Engage

  The Frankie Mae Foundation

 frankiemaefoundation

B



CLIMB

(Charlotte Legal Initiative to Mobilize Businesses, Inc.)

Casey Burke

Executive Director

CLIMB is a non-profit legal services organization that offers free business law support to under-resourced small business owners and entrepreneurs in Mecklenburg County who would not otherwise be able to afford legal services. CLIMB leverages volunteer support from Charlotte's largest and most prestigious law firms, using their expertise to help local small businesses start, grow, and thrive.

SEED20 Coaches

Scott Fligel & Debby Love

Engage

 [Charlotte Legal Initiative to Mobilize Businesses \(CLIMB\)](#)

 [climbprobono](#)

C



LiveLearnPlay

D

Dominique Bostic-Arrington

Executive Director

LiveLearnPlay is a nonprofit outdoor learning organization dedicated to reducing health and educational disparities by providing inclusive, nature-based programs for underserved children and families. Through therapeutic outdoor education, family support initiatives, and community partnerships, LiveLearnPlay improves physical and mental well-being, strengthens early development, and creates lasting, intergenerational change.

SEED20 Coaches

Kim Aprill & Mario Jovan Shaw

Engage

 LiveLearnPlay

 livelearnplay_ot



Path to Permanency

E

Joselyn Reed

Executive Director

Path to Permanency mobilizes the foster care community through a collaborative model to spark a countywide movement establishing Mecklenburg as the gold standard for achieving timely, stable outcomes for children in foster care. Guided by a democratic process, the initiative targets three barriers to permanency: accountability and communication, case professional turnover, and mental health challenges. This approach results in systematic change that improves the lives of children.

SEED20 Coaches

Henry Lander & Scott Banks

Engage

   Path to Permanency



Bechtler Museum of Modern Art: Art on Prescription

Todd Smith

Executive Director

Charlotte Art on Prescription is a new initiative spearheaded by the Bechtler Museum that brings together Charlotte arts organizations to combat social disconnection and loneliness through collaboration. Healthcare workers provide referrals giving individuals year-long free access to diverse arts programming. The program reinforces research showing arts participation supports mental and social health in strategic, meaningful ways.

SEED20 Coaches

Lorrina Eastman & David Privitera

Engage

   Bechtler Museum of Modern Art

F

ART



Exposure Project Inc

G

Leanna Calvin

Executive Director

Exposure Project empowers under-resourced youth by connecting their aspirations to real-world careers through immersive, hands-on experiences. Its tiered model begins with career shadowing across diverse industries and advances to a youth-led food truck initiative, where middle and high school students will design, build, and launch a fully operational business, cultivating leadership, entrepreneurship, and practical skills for future success.

SEED20 Coaches

Reggie McNeil & SJ Amoroso

Engage

  Exposure Project

 exposureproject_inc



Fearless Brown Girls®

H

Diana Williams

Executive Director

Fearless Brown Girls® empowers girls to build financial confidence and independence. Through interactive workshops on budgeting, saving, credit, investing, and entrepreneurship, paired with leadership summits, mentorship, and action-based accountability, they turn money lessons into assets. On a path to \$25K in net worth by age 25, young women become more economically mobile, embrace their authenticity, and create bold, impactful futures.

SEED20 Coaches

Kamilah North & Aashh Parekh

Engage

[f](#) [in](#) Fearless Brown Girls® Inc

[@](#) fearlessbrowngirls



Piper G. Amundson Foundation

Kelley Amundson

Board Chair

The Piper G. Amundson Foundation is dedicated to addressing the critical lack of access to quality pediatric hospice care in the greater Charlotte region. The Foundation's flagship initiative, Piper's Place, will become the Southeast's first home offering pediatric respite, palliative, and hospice services, providing compassionate care and support for families during their most vulnerable moments.

SEED20 Coaches

Sarah Fligel & Hunter Cook

Engage

  Piper G. Amundson Foundation

 piper_g_amundson_foundation

I



Zealous Empowering Nurturer (ZEN)

J

April Booker

Executive Director

Zealous Empowering Nurturer (ZEN) is a Charlotte-based nonprofit strengthening communities by addressing food insecurity while nourishing minds for healthier living. Through community gardens, nutrition education, and hands-on learning, ZEN equips people to grow food, understand nourishment, and make confident lifestyle choices. ZEN doesn't just talk about food insecurity; they grow solutions that create lasting wellness and community resilience.

SEED20 Coaches

Fran Marie & Raj Merchant

Engage

 Zealous Empowering Nurturer inc.

  bethezen22



Voting Criteria

Content

Community Need

Innovation

**Potential Lasting
Impact**

Pitch

Compelling

Engaging

Voting Instructions

1

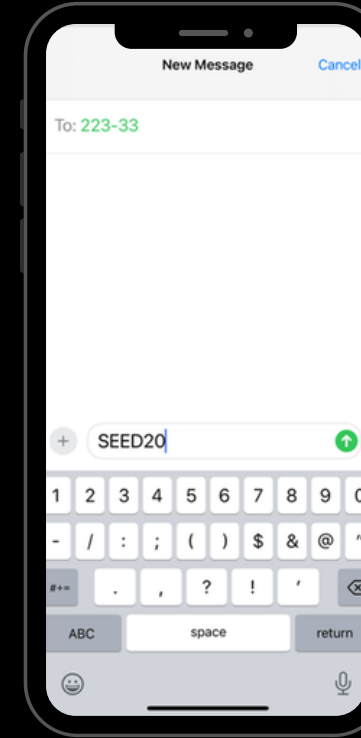
Text SEED20 to 22333

Open a new message

Enter 22333

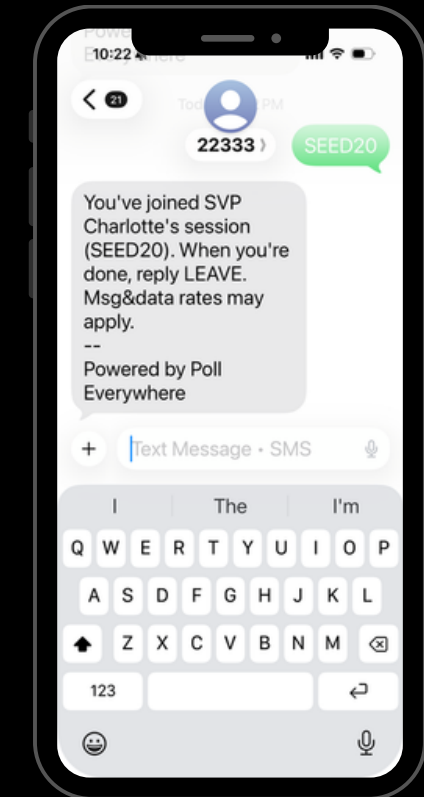
Type SEED20

Hit send!



2

Wait for a reply text message



3

After you receive a response, enter the letter corresponding with your choice

Text to Vote

The voting window will be 3 minutes!

Text SEED20 to 22333

Wait for a response text message

After you receive a response, enter the letter corresponding with your choice



A
Let's Talk About It
The Autism Center
La Becky Roe



B
The Frankie Mae
Foundation
Venitra White-Dean



C
CLIMB
Casey Burke



D
LiveLearnPlay
Dominique Bostic-Arrington



E
Path to
Permanency
Joselyn Reed



F
Bechtler Museum
of Modern Art
Art on Prescription
Todd Smith



G
Exposure
Project
Leanna Calvin



H
Fearless Brown Girls
Diana Williams



I
Piper G Amundson
Foundation
Kelley Amundson



J
Zealous Empowering
Nurturer (ZEN)
April Booker

As a nonprofit, SVP Charlotte relies on the generosity of sponsors, donors, and volunteers to bring SEED20 to life.



Inspired? Donate Now!

TEXT SEED2026 to 707070

- Support multiple participants and SVP Charlotte
- No credit card fees for donations under \$1,000
- Adjust the tip amount to 0%

Need more inspiration to donate?

Wells Fargo is matching the first \$20,000 in donations tonight!



**TEXT SEED2026 to
707070**

Social Venture Partners Charlotte THANKS

Our Generous Sponsors

Headline Sponsor



**WELLS
FARGO**

Social Venture Partners Charlotte THANKS

Our Generous Sponsors

Social Capital Sponsor



ally do it right.

Social Venture Partners Charlotte THANKS

Our Generous Sponsors



Spark Sponsors



Community Sponsors



Supporting Sponsor



Social Venture Partners Charlotte THANKS

Our Generous Sponsors

In-Kind Program Sponsors



In-Kind Prize Sponsors



Narrative Design for Change Makers



Social Venture Partners Charlotte THANKS

*Our Individual Sponsors
called Cultivators*

Anonymous
Michele and Greg Amoroso
Missy and Scott Banks
Denise and Mike Burkard
Cynthia and David Crane
Susan Davis
Manisha Desai and David Calligaro
Christi and Will Farr
FA Wealth Advisors- Northwestern Mutual
Teresa and Adrian Hee



Social Venture Partners Charlotte THANKS

*Our Individual Sponsors
called Cultivators*

Michele Juliana
Stacy and Bradley Kirk
Maria and Henry Lander
Stephanie and Scott Leo
Margaret and Harrison Marshall
Jennifer and William Martin
Jen and Jay McDonald
The Quarantinis
Stephanie and Gary Starr
Cristy and Nick Travaglino
Diane and Loren Weil
Karyn Yaussy and Scott Brennan



Social Venture Partners Charlotte THANKS

Our Volunteer Coaches



SJ Amoroso
Kim Aprill
Scott Banks
Hunter Cook
Lorrina Eastman
Sarah Fligel
Scott Fligel
Henry Lander

Debby Love
Fran Marie
Raj Merchant
Reggie McNeil
Kamila North
Aash Parekh
John Pesavento
David Privitera
Michael Richardson
Mario Shaw
Lynne Walters
Lynda Wilhelm



Social Venture Partners Charlotte THANKS

Our Coaching Advisory Team

Christi Farr, Team Lead
Bill Craver
Kerry Tornesello



Social Venture Partners Charlotte THANKS

Our Marketing Team

Jennifer Martin, Team Lead

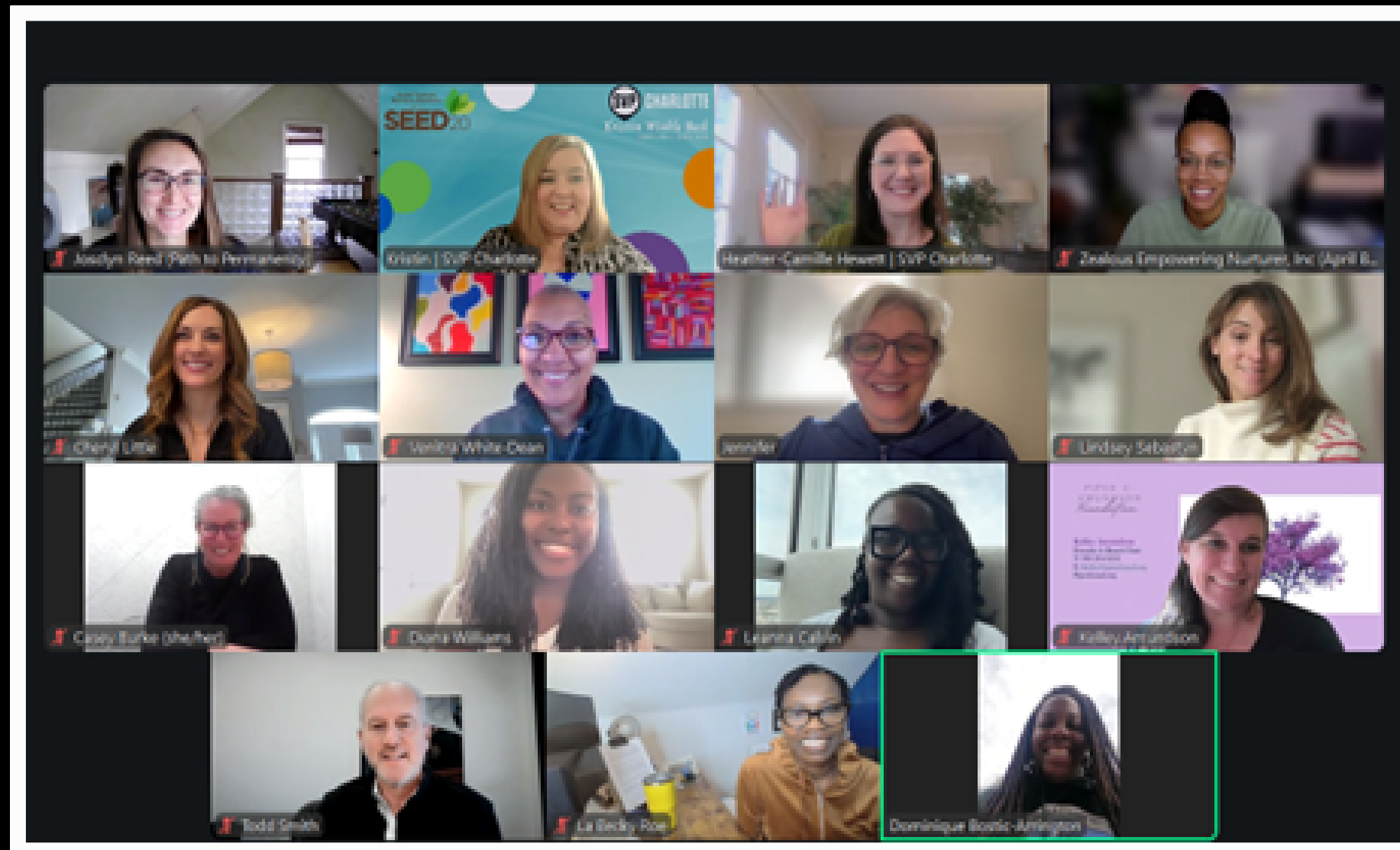
Natalie Fath

Michelle Cottrell

Lindsey Sebastyn

Basic with Cheryl

Content Creator



Social Venture Partners Charlotte THANKS

Our OnStage Team

Caroline Littrell, Team Lead
Indre Buechler, Team Lead
Anne Sinsheimer



Social Venture Partners Charlotte THANKS

Our Alumni Enrichment Team

Henry Lander, Team Lead

Christi Farr, Team Lead

Michele Amoroso

Caroline Littrell

Michelle Cottrell

Cristy Travaglini



Social Venture Partners Charlotte THANKS

Our Selection Advisory Team

Cristy Travaglino, Team Lead

Rachel Johnson, Team Lead

Gary Starr

Stephanie Bensinger Starr

Greg Brown

Holly Edwards

READERS & INTERVIEWERS:

Michele Amoroso

Scott Banks

Becca Black

Scott Brennan

Indre Buechler

Mike Burkard

Paul Caleca

Michelle Cottrell

David Crane

Jennifer Martin

James Dye

Jenny Dye

Sarah Flige

Maria Lander

Henry Lander

Harrison Marshall

Margaret Marshall

Rajan Merchant

John Pesavento

Tammy Privitera

Denise Ratchford

Sam Sanders

Limda Wilhelm

Henry Withers

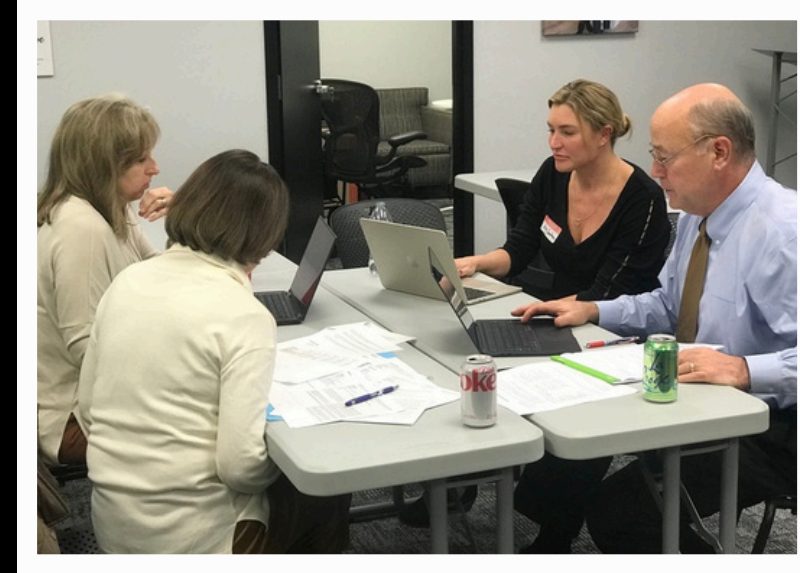
Molly Withers

Karyn Yaussy



Social Venture Partners Charlotte THANKS

Our Volunteers



Social Venture Partners Charlotte THANKS

Our Corporate Partners

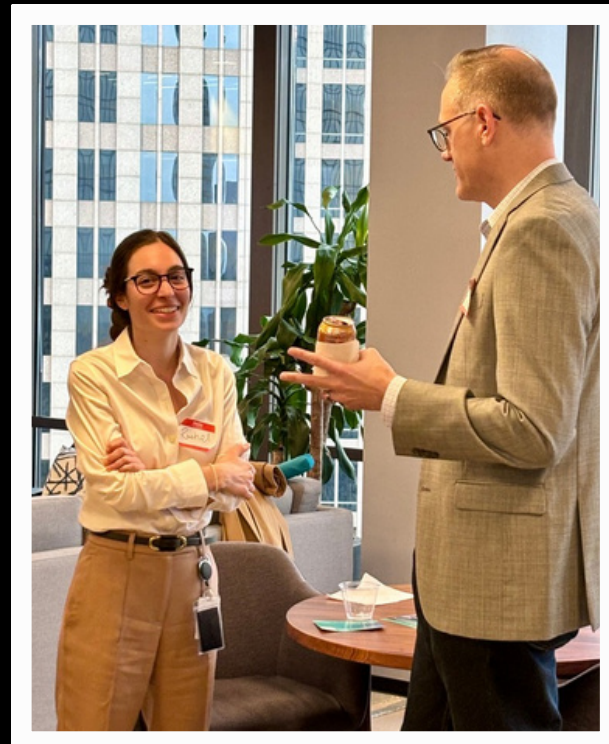


GEM
FOUNDATION

CONSULTING



OPKALLA[®]
IT SOLUTIONS REIMAGINED



SEED20 Alumni



100 Gardens

1sTouch

A.C.E. Your Prostate Exam

Adoption Support Alliance

American Pit Bull Foundation

ANSWER Scholarship

Applause for the Cause

Arin's Good Girl Dog Treats

ArtPop

The Arts Empowerment Project

Arts for Life Charlotte

Assist M.E.

Attach Families

Augustine Project for Literacy

Autumn Rain

Be More Foundation

Beds for Kids

Behailu Academy

Bellas

BellXcell

A Better World

Body and Soul Senior Fitness Center

Books with Color

Bottles n Bottoms

Brand the Moth

Brave Step

BraveWorks

BreatheINK

A Brighter Day Outreach

The Bulb

Camp Blue Skies

Campus Pride

CARS

Catapult Concepts

Catawba Riverkeeper Foundation

Center for Community Transitions

Changed Choices



Charlotte Ballet REACH

Charlotte Bilingual Preschool

Charlotte Food Innovation District

Charlotte Rescue Mission

Charlotte Speech and Hearing

Charlotte Teachers Institute

Charlotte ToolBank

Charlotte-Mecklenburg Food

Policy Council

ChemoCars

Children's Attention Home

Circle de Luz

City Startup Labs

Community Culinary School of

Charlotte



SEED20 Alumni

Community Kitchen Program

Cops & Barbers

Croquet Records

Day Services Program at

Children's Attention Home

Despierta

Digi-Bridge

Digital Angels

Doing My Part

Dream Chasers

Eagle Rock Camp

Easter Seals UCP

The Election Hub, from the

Charlotte Ledger

El Puente Hispano

Emerge-The Art of Leadership

EmpowHERment

Exodus Foundation

F3 Foundation

The FACTS Initiative



Families First in

Cabarrus County

Families Forward Charlotte

Family Impact Fund

Feed the Mind

Feeding Charlotte

FeedNC

FOCHUS Friends of the Central

Highlands in the US

The Forum at Hope Haven

Foster Village Charlotte

Freedom Fighting Missionaries

Friends of the Children-Charlotte

Friendship Circle

Friendship Gardens

Galilee Ministries of East Charlotte

GardHouse

GenOne

Girl Talk Foundation

Great Outdoors University



Green Teacher Network
Grub to Grub

Health Guidance

Hip Hop Orchestrated

Hope to Home

Hope Vibes

Human Capital Investment

I AM not the Media

Inspire the Fire

Institute for Philanthropic
Leadership

InTech Camp for Girls

Investment Pathway

iSpeak Now

JA Company Program

Joedance Film Festival



SEED20 Alumni

Joe's Camp

Juvenile Court Intervention Program

Katie Blessing Center

Key Resale Shop

Kika's House

Kids Heartfelt Health

Kids in Technology

KNOW Charlotte

Latin Americans Working for
Achievement (LAWA)

The Learning Collaborative

Let Me Run

LilySarahGrace

Lorien Academy of the Arts

Lotus Campaign

Make It Work

Male Leadership Academy
of Charlotte

McClintock Partners In Education

Metrolina Association For The Blind



Mind Body Baby NC

Money Magnets Club

Mothers Raising Sons

Musical Minds

My 1st Suit

Neet's Sweets

New Leaders

NewGen Peacebuilders

Next Step Clubhouse

Open Charlotte Brigade

ourBRIDGE for KIDS

Our Daily Bread Foundation

Para Guide Foundation

Patriots Path

Pearls for Creative Healing

Phillips Academy

Pivot Point Transitional Housing

PlateShare

Playing for Others

Pollution Detectives

PopUp Produce

power2give.org

Present Age Ministries

Profound Gentlemen

Project Harmony

Project One Scholarship
Fund

Project Outpour

Project Safe Child

Project Scientist

Project2Heal

Promising Pages

Prospera North Carolina

Queen City Mobile Market

Queen City Robotics

Queen City Unity

Reading Partners Charlotte

Rebuilding Together of Greater
Charlotte

Red Boot Way

Redeeming Joy

Refugee Support Services

The Relatives



SEED20 Alumni



Renaissance West Community Initiative

Resound Educators

Resource Connection Gateway

Respectability Foundation

Restore Global

Retiset

RIC's Market

Right Moves for Youth

Rooted Hearts Ministries

Running Works

The Sandbox

Safe Families for Children-Charlotte



Shakespeare in a Chair

She Built This City

Silent Images

Siloam Educator Institute at the Charlotte Museum of History

Soccer FC

Southside Rides Foundation

Sow Much Good

Speak Up Magazine

S.T.A.R.S. Math and English Academy

Sullenberger Aviation Museum

Sustain Charlotte

Swaraj Yoga

Teaching Fellows Institute

Think Broader Foundation

The Third Talk

Toolbag for Success

Transcend Charlotte

Transformation Educational Services



Transforming Youth Movement

Transit First CLT

Utreia Society

UMAR

Uncommen

Upcycle Arts

UrbanPromise

Vision to Learn

We Rock Charlotte

A Widow's Path

WINGs for Kids

Wise Guys

Workers Collaborative Center

Youth Development Initiatives

Youth Empowered Solutions!

Youth Meditation

ZABS Place



Social Venture Partners Charlotte Who We Are



Social Venture Partners Charlotte

Who We Are

Jackie Adams

Michele & Greg Amoroso

Eddie Angelbello

Missy & Scott Banks

Ralph Beck

Lorin & Geoff Bent

Bleema & William Bershad

Becca Black

Carol & Greg Brown

Indre Buechler

Denise & Mike Burkard

Caitlin & Connor Check

Michelle Cottrell



Cynthia & David Crane

Susan & John Daniel

Elizabeth Davis

Manisha Desai & David Calligaro

Jenny & James Dye

Holly Edwards

Steve Ermish

Eric & Martha Eubank

Christi & Will Farr

Natalie & Grant Fath

Lea & Doug Fitzpatrick

Sarah & Scott Fligel



Social Venture Partners Charlotte Who We Are



Matt Gardner
Teresa & Adrian Hee
Lou Jerome & Karen Cobb
Rachel & Steven Johnson
Michele Juliana
Amy & Dallas Kaplan

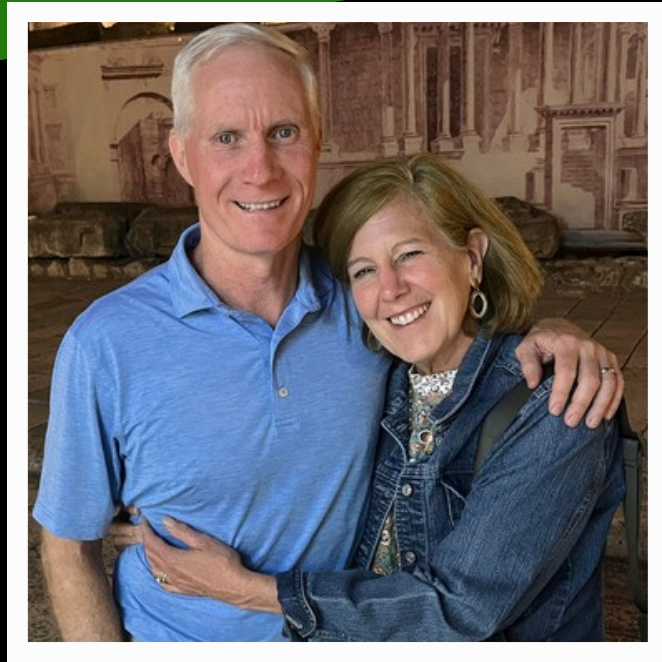


Maria & Henry Lander
Stephanie & Scott Leo
Caroline Littrell
Rick Lich
Harrison & Margaret Marshall



Social Venture Partners Charlotte

Who We Are



Jen & Bill Martin
Anna & John McCoy
Jen & Jay McDonald
Grace Mercer Schott
Rajan Merchant
Aashh Parekh
John Pesavento
Tammy & David Privitera
Rick Ramirez
Jack Rand
Denise & Jim Ratchford
Ed Ritter



Pamela Rooney
Neely Rose
Sam Sanders
Lindsey Sebastyn & Anant Shah
Anne & Michael Sinsheimer
Stephanie & Gary Starr
Cristy & Nick Travaglinio
Regan & Adam Wassell
Patti & Mark Weber
Diane & Loren Weil
Sarah & Patrick Wilde
Lynda & Bob Wilhelm
Henry & Molly Withers
Karyn Yaussy & Scott Brennan



Social Venture Partners Charlotte
Thanks
YOU



for attending tonight

We want YOU to join us!

Supporting SEED20 and local, innovative nonprofits is both fun and fulfilling—we'd love to have you join us.

To learn more about Social Venture Partners Charlotte, stop by our table at the reception, [click here](#), or scan this QR code.

